

LEDGFXL100UNV50K

100 Watt Multi-Purpose LED Area Light



Shown with
standard
trunnion
mount



STANDARD



The LEDGFXL series is a group of architectural LED area luminaires designed to illuminate parking areas, pathways, building facades, loading docks, and a wide variety of other large, general site lighting applications. Multiple mounting options make the LEDGFXL a versatile luminaire for flood lighting, pole-, ground- and wall-mounted area lighting, and other outdoor lighting requirements.

FEATURES

- Long-life LEDs provide 69,000 hours of operation with at least 70% of initial lumen output (L_{70}).
- Type III models deliver 12,543 lumens & 125 LPW at 5000k.*

- Universal 120-277 AC voltage (50-60Hz) is standard.
- 0-10vdc dimming capability is standard.
- Power factor > 0.90.
- Total harmonic distortion < 20%.
- Color rendering index > 80.
- Die cast aluminum housing with durable, dark bronze powder coat finish, and a heat-resistant polycarbonate lens.
- Wireway enclosure is sealed with a water-tight, silicon rubber gasket.
- Effective projected areas (EPA's) are:
 - Front = 0.38 square feet
 - Side = 0.30 square feet
 - Face = 1.04 square feet
- Threaded receptacle ($\frac{1}{2}$ " NPS) for photocell. Optional arms and slip-fitters provide additional photocell mounting options.
- Easy installation in new construction or retrofit applications.

* Contact factory for other color temperatures and lumen packages.
** L_{70} hours are IES TM-21-11 calculated hours.

WARRANTY & LISTINGS

- cULus listed for wet locations (-30°C to 40°C / -22°F to 104°F)
- IP65 rated.
- DLC standard approved (except as noted below).
- Complies with FCC Part 15, Class B.
- Complies with EN61000-4-5, surge immunity (4kV).
- 5-year warranty on all electronics and housing.

MOUNTING OPTIONS

- Trunnion mount is standard.
- Slip-fitter mount provides attachment to poles (2 $\frac{3}{8}$ " O.D. tenon).
- Steel arm mount provides secure attachment to flat surfaces.
- Yoke mount models are available by special order.

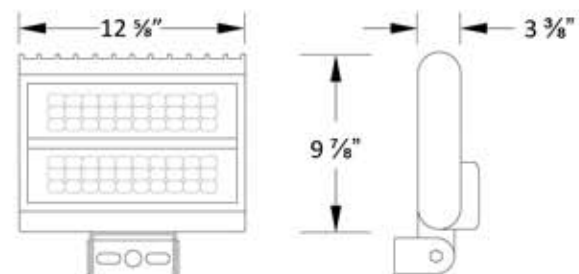


Steel Arm
Mount Option



Slip-Fitter
Mount Option

DIMENSIONS



Weight: 9.6 lb.

ORDERING INFORMATION

LED GFXL100UNV-50K

Examples: (Slip-Fitter, Type III):

* Note: For Slip-Fitter or Steel Arm mounting, order a luminaire with the standard Trunnion mount installed LEDGFXL100UNV and either the Slip-Fitter "SF" or Steel Arm Bracket. The Slip-Fitter and Steel Arm mounts are shipped in separate cartons than the luminaire, and are field-installed after removing the standard Trunnion mount.

*** Note: DLC 4.2 listing is pending.

LEDGFXL100UNV-50K



ELECTRICAL DATA

Model	Color Temperature	CRI ¹	Luminaire Lumens	Luminaire Watts	Lumens Per Watt	Input Voltage ²	Input Current (A)			Power Factor	THD ³	L ₇₀ Hours ⁴
							120V	240V	277V			
LEDGFXL100UNV50K	5000k	> 80	12,543	100	125	120-277	0.83	0.42	0.36	> 90%	< 20%	69,000

¹ Color rendering index.

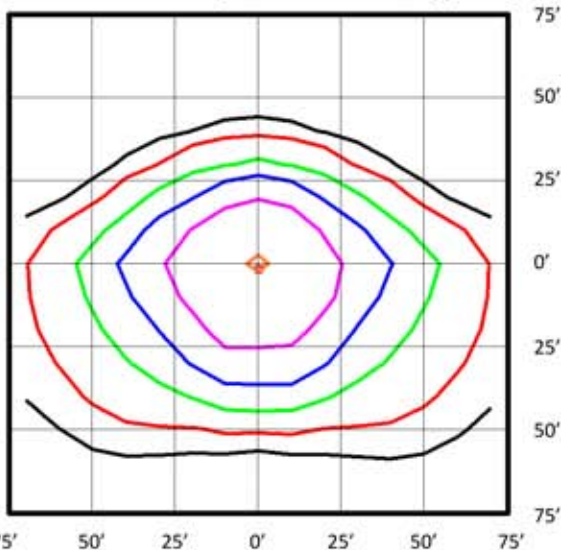
² All 50-60Hz.

³ Total harmonic distortion.

⁴ L₇₀ refers to the number of hours at which lumen output declines to 70% of the initial level. L₇₀ hours are IES TM-21-11 calculated hours.

PHOTOMETRIC DATA

LEDGFXL100 (12,543 Lumens, Type III [T3] Distribution)



Notes:

- Isofootcandle plots depict initial footcandles at grade.
- Gridlines represent units of mounting height of 25 feet.

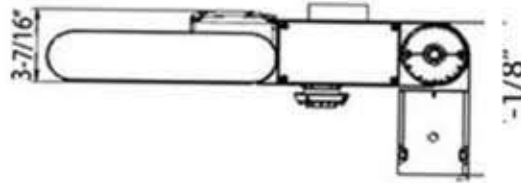
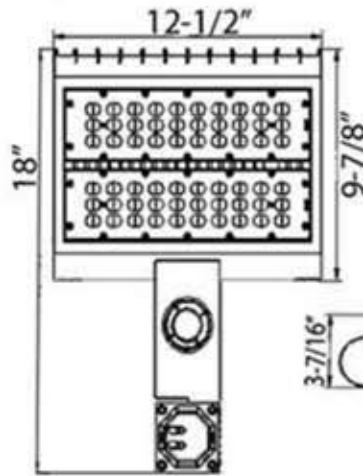
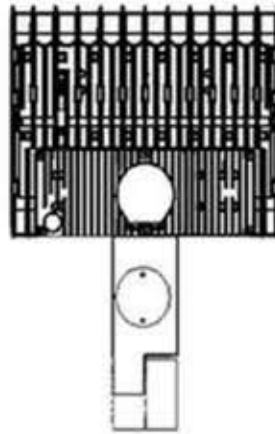
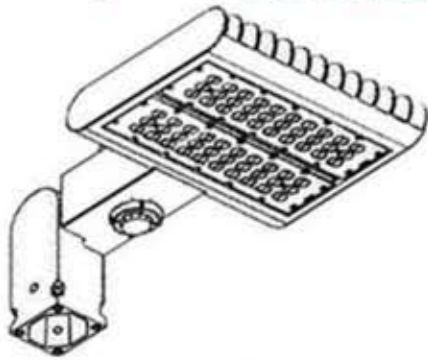
Foot Candles

- 5.0
- 2.0
- 1.0
- 0.5
- 0.2
- 0.1

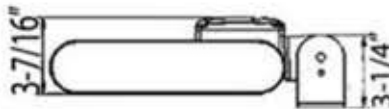
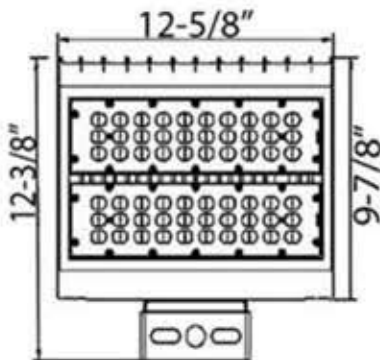
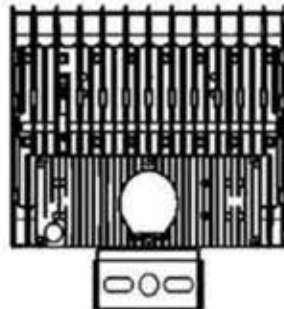
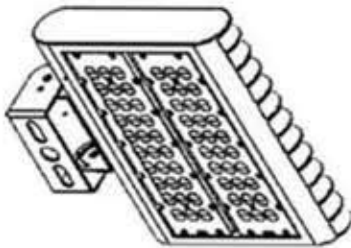
BUG Rating: B3-U2-G2

Zone	Lumens	%
FL - Front - Low (0-30)	1,430	11%
FM - Front - Medium (30-60)	4,156	33%
FH - Front - High (60-80)	2,064	16%
FVH - Front - Very High (80-90)	123	1%
Total Forward Light	7,772	62%
BL - Back - Low (0-30)	1,356	11%
BM - Back - Medium (30-60)	2,666	21%
BH - Back - High (60-80)	694	6%
BVH - Back - Very High (80-90)	28	0%
Total Back Light	4,744	38%
UL - Up Light - Low (90-100)	2	0%
UH - Up Light - High (100-180)	25	0%
Total Up Light	27	0%
Total Lumens	12,543	100%

LEDGFXL



SLIP FITTER



TRUNION