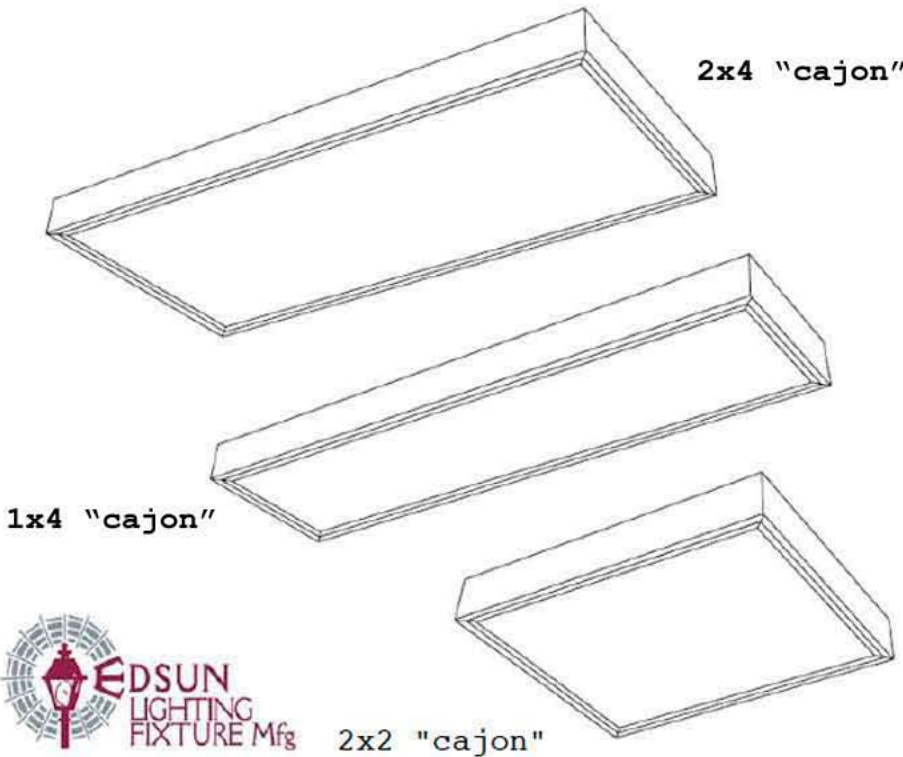


# “ESL”

1' x 4', 2' x 2', 2' x 4'



**Housing:** Die-formed heavy gauge steel with durable high gloss powder coat post paint finish (90% reflectance) over rust inhibiting phosphate coat. Flush white steel door, with mitered corners, can be hinged from either side. Knockouts provided.

**Shielding:** Pattern #12 acrylic prismatic lens or optional white acrylic lens.

**Electrical:** Fully wired for 120V, 60Hz AC operation, thermally protected, automatic resetting, Class P, sound rated A, high-power factor ballast, unless otherwise specified. Electronic T8 shall be instant start, <20% harmonic distortion standard, specify suffix UNV for <10% harmonic distortion. Specify suffix UNV for universal voltage, 120 through 277V, 50/60Hz AC operation, Electronic T8 only. UL and C-UL listed, damp location. Also available in T5 fluorescents UNV ballast.

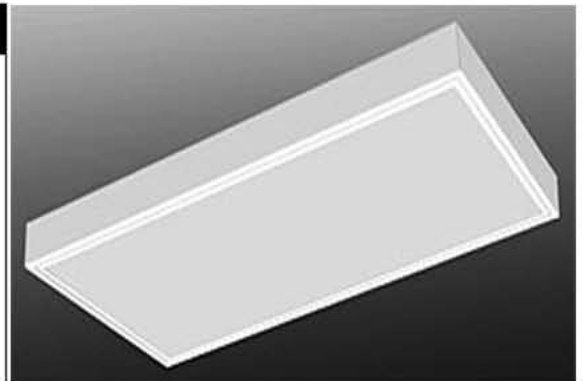
**Mounting:** Surface or stem mount individually or in continuous row. Use four stems per 2x2 or 2x4, two for 1x4 unit.



2x2 "cajon"

## FEATURES AND BENEFITS

- |                          |   |
|--------------------------|---|
| Low profile              | • Unassuming light source; optimizes T8 lamp/ballast technology         |
| Swing action cam latches | • Easy access with no tools needed                                      |
| Post-painted metal parts | • Durable, uniform finish; controlled reflectivity eliminates hot spots |
| Surface or pendant mount | • Flexible mounting options   |
| Fully assembled          | • Ready to install  |



## ORDERING INFORMATION

Example: ESL24-432-L-UNV

ESL	24	432L	
SERIES	SIZE	LAMPS	WEIGHT
S - Surface Mounted	14 - 1 x 4	232 - (2) 32W 48" T8	23 lb.
	22 - 2 x 2	232U - (2) 32W U6" T8	27 lb.
	24 - 2 x 4	417 - (4) 17W 24" T8	31 lb.
		332 - (3) 32W 48" T8	
		432 - (4) 32W 48" T8	31lb.

LOUVER UNV	VOLTAGE
	120V 277V UNV - 120-277V

EM

emergency battery

- OPTION**
- SEC - Silver Eggcrate
  - WEC - White eggcrate
  - CR - Chrome Reflector



**Ask about T5 part numbers**

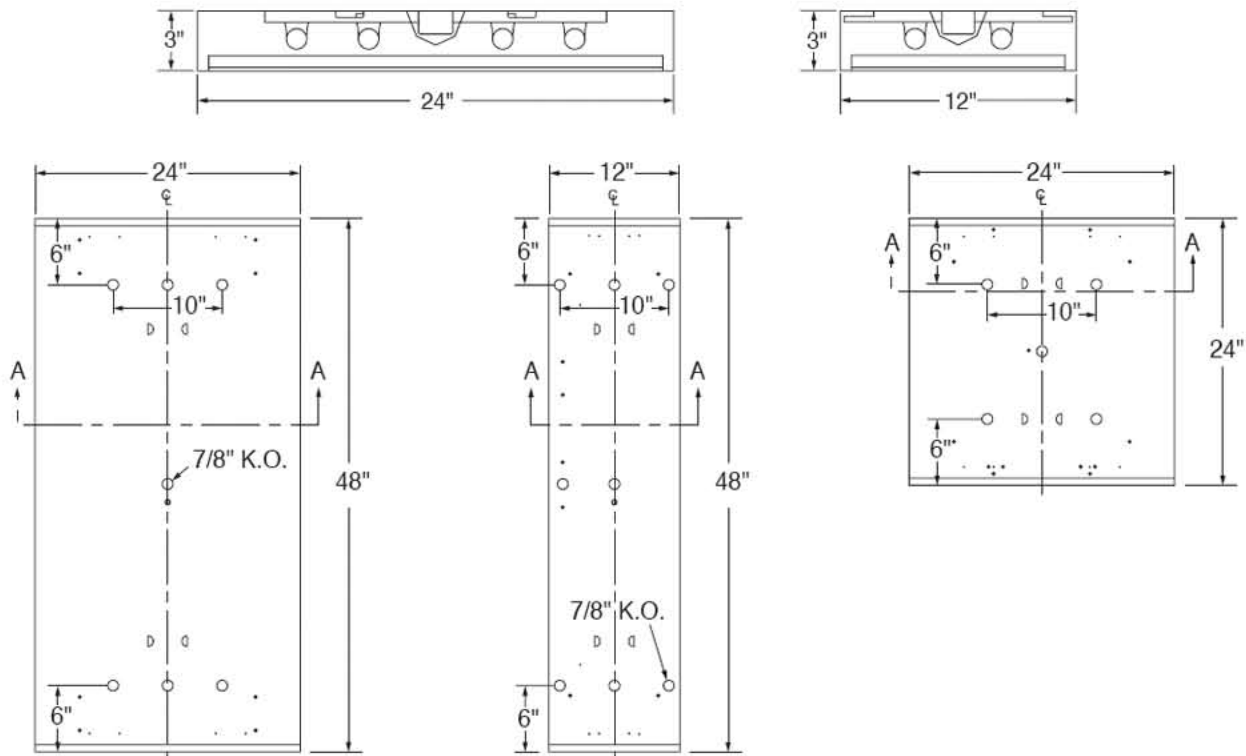
"ESL" Low Profile Surface Box 1' x 4', 2' x 2', 2' x 4'

### PHOTOMETRIC DATA, ESL 4-32W 2 x 4 Model

CANDLEPOWER				LIGHT GUIDE (T8 LAMPS AND ELECTRONIC BALLAST)				COEFFICIENT OF UTILIZATION												
Angle	0	45	90	Area/fixture in sq.ft./lg. room, good conditions - 8' to 10' ceilings				RC	80	70	50	RCR	70	50	30	50	30			
				Footcandles	2x2 2-"U" 6"	1x4 2-32W	2x4 4-32W													
0	3233	3233	3233																	
5	3213	3221	3225	35	91	81	193	1	87	83	80	85	82	79	78	76				
15	3105	3134	3176	50	64	57	135	2	80	74	69	78	73	68	70	66				
25	2896	2953	3047	75	42	38	90	3	74	66	60	72	65	60	63	58				
35	2537	2631	2799	100	32	28	67	4	68	59	53	66	58	52	56	51				
45	2012	2133	2334	<b>AVERAGE LUMINANCE CD/SQ.M</b> <b>Angle 0 45 90</b>				<b>LIGHT DISTRIBUTION</b> <b>Zone Lumens %Lamp %Fixture</b>				5	62	52	46	60	52	45	50	44
55	1355	1428	1593									45	5036	5036	5036	0-30	2609	22.9	29.0	6
65	796	756	814	55	3680	4326	4807	0-40	4348	38.1	48.3	7	53	42	36	51	42	35	41	35
75	406	387	359	65	2934	3000	3450	0-60	7535	66.1	83.7	8	48	3	31	47	37	31	36	31
85	150	154	177	75	2443	2160	2877	0-90	9004	79.0	100.0	9	45	34	27	43	33	27	33	27
90	5	12	20	85	2681	3163	3699					10	41	31	24	40	30	24	30	24

Lamps = (4) F32T8 @ 2850 lumens ea. LER: 69.5 Input watts = 104.5 Ballast Factor: 80.6% Ballast - Electronic 120V S/MH: 0° = 1.3; 90° = 1.4  
 Comparative yearly lighting energy cost per 1000 lumens = \$ 3.45 based on 3000 hours and \$.08 per KWH

### DRAWINGS AND DIMENSIONS



Edsun Lighting Fixture Mfg. • 569 W. 17 St., Hialeah, FL USA 33010-2412

CALL 305-888-8849 • FAX 305-883-0005 • WWW.edsunlighting.COM • sales@edsunlighting.com