



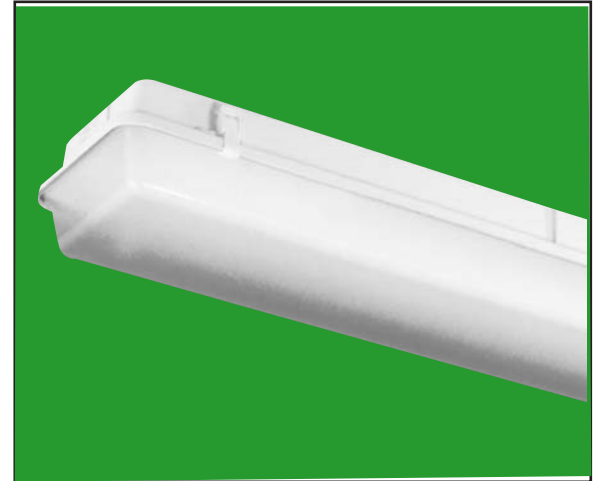
# "VT" Series Gasketed Enclosure

## VT Series For Wet and Damp Locations

### Description

Gasketed Enclosures are dust and moisture resistant and require the installation of a striplight or channel type lighting fixture. The enclosures are composed of a fiberglass body and a high impact acrylic / DR crepe pattern diffuser positioned into the continuous gasketed upper body slot and securely held in place by celcon retaining latches that assure a continuous seal.

By installing a U.L. listed fluorescent strip light or channel type lighting fixture into the "VT Series" Gasketed Enclosure and submitting the entire unit to Underwriters Laboratories, a U.L. Listed fixture suitable for use in wet or damp locations can be realized.



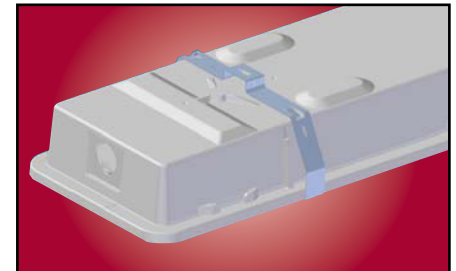
VT Series

### PerfSeal

Edsun's new PerfSeal gasketing offers unprecedented resistance to water absorption. PerfSeal gasketing tested 100% moisture free after 144 hours of submersion as compared to conventional foam gasketing where complete saturation is reached within 1 hour.

### Bracket for Vapor Tight Fixtures

Edsun Lighting offers a new bracket system for the VT vapor tight enclosures. This versatile new bracket is revolutionary in its simplicity. Vandal proof latches are available upon request.



Bracket

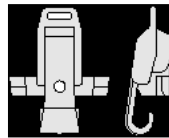
### VT Series

-VT 220

Shallow enclosure is available in 2' length only and will accept 1 or 2 lamp, rapid start fluorescent fixtures.

-VT 240, VT 248 and VT 296

Deep enclosure will accept 1 or 2 lamp, rapid start, high output or slimline type fluorescent fixtures.



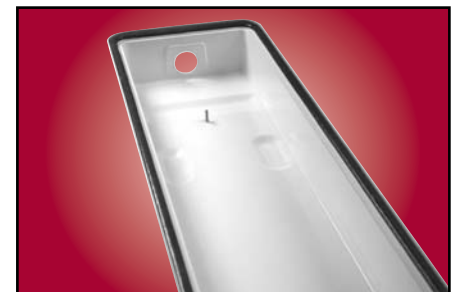
LATCHES



"END PLUG"



"WET HUB"



"PerfSeal"

Catalog No.	Description
<b>Complete Units</b>	
VT 220	4' Shallow Housing, High Impact Acrylic/DR Diffuser, Latches and End Plugs
VT 240, VT248&HO	4' Deep Housing, High Impact Acrylic/DR Diffuser, Latches and End Plugs
VT 296&HO	8' Deep Housing, High Impact Acrylic/DR Diffuser, Latches and End Plugs
<b>Replacement Diffusers</b>	
VT220LENS	2' Shallow High Impact Acrylic/DR Clear Crepe Diffuser 6-5/8"W x 26"L X 5-3/16"H
VT240LENS	4' Deep High Impact Acrylic/DR Clear Crepe Diffuser 7-5/8"W x 49-13/16"L, (or) 52"L 5-5/8"H
VT296LENS	8' Deep High Impact Acrylic/DR Clear Crepe Diffuser 7-5/8"W x 97-13/16"L, (or) 102-1/16"L 5-5/8"H

**Note:** Extra LCW White latches and FEPW white end plugs are available upon request. Polycarbonate latches and tamper proof latches are also available. Replacement diffusers are available. Contact Edsun. with requirements.

Deep Diffusers are 1" deeper than shallow.

